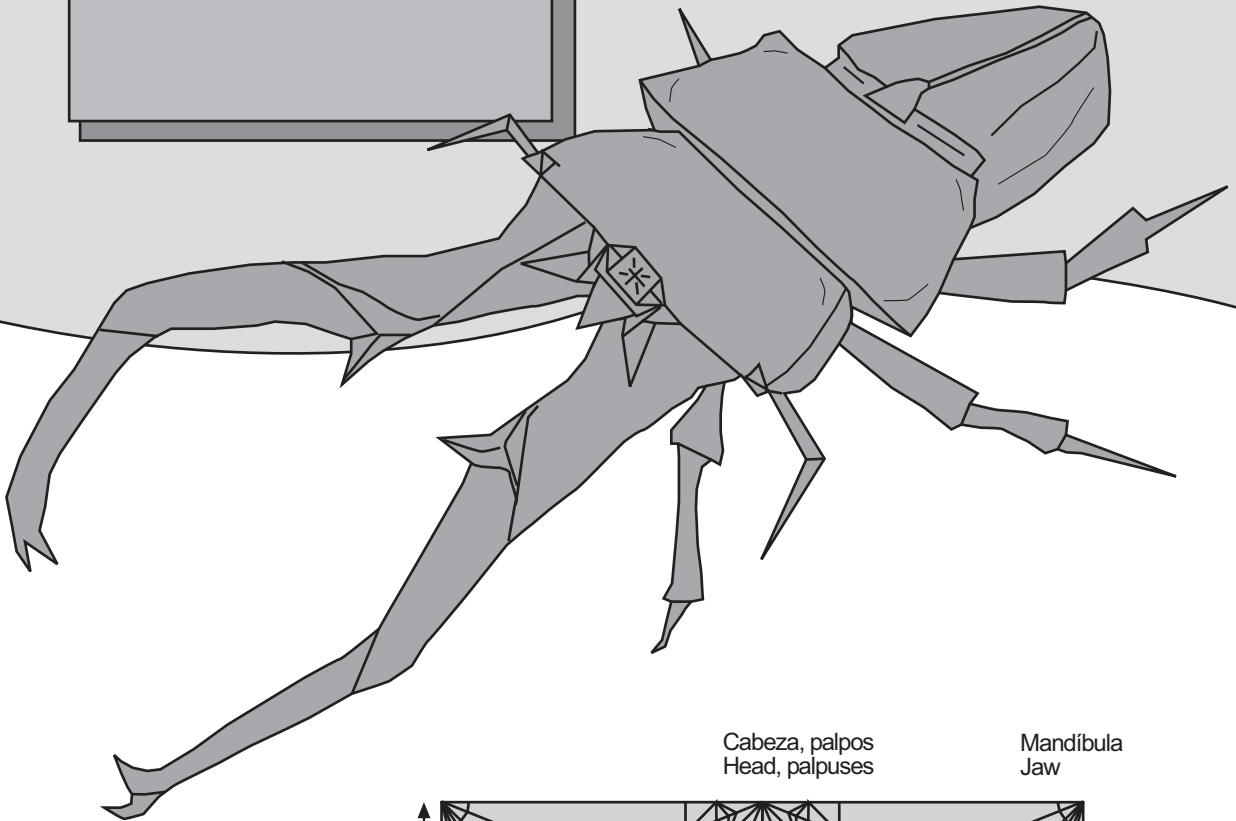
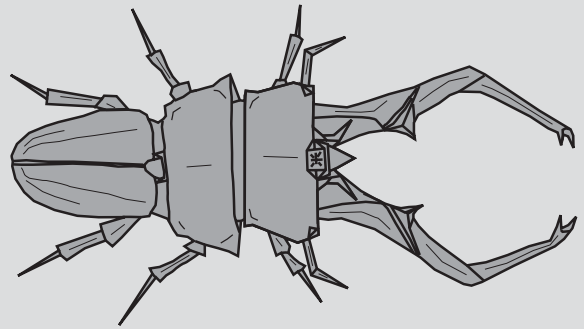


Cyclommatus Imperator

(c) M. Sirgo. 2003-05

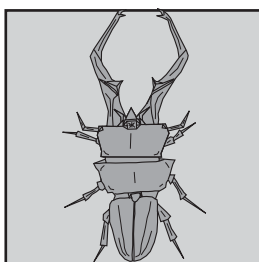


Cabeza, palpos
Head, palpuses

Mandíbula
Jaw

El papel debe ser marrón o verde oscuro. Se recomienda papel fino, menor de 40 gramos, doble seda, banano, lokta, metalizado o sandwich de 35x35 cm o mayor.

The paper should be brown or green dark. Fine paper is recommended, smaller than 40 grams, double silk, banana tree, lokta, metalized or sandwich of 35x35 cm or bigger.



2/5

